



74 Seaton Close, Wardley, NE10 8SG

Offers Over £170,000

Nestled in the charming Seaton Close, this delightful semi-detached bungalow is a true gem in a highly sought-after area. The property boasts a generous plot and has been lovingly maintained, offering a warm and inviting atmosphere for its future occupants. Upon entering, you are greeted by a welcoming hallway that features built-in storage, providing both practicality and style. The spacious lounge is a highlight of the home, complete with a feature fireplace that adds a touch of character and warmth. The well-appointed kitchen is equipped with an integrated eye-level oven and a gas hob, making it a perfect space for culinary enthusiasts. Adjacent to the kitchen, the conservatory offers a lovely spot to relax and enjoy views of the garden. The internal hallway leads to two comfortable bedrooms, one of which benefits from built-in wardrobes, ensuring ample storage space. The bathroom is conveniently located, serving both bedrooms with ease. A unique feature of this bungalow is the fully floored and boarded loft, which is carpeted and fitted with power, lighting, and a Velux window, providing potential for additional living space or storage. Outside, the property is complemented by well-maintained gardens to both the front and rear, creating a serene outdoor retreat. The gated driveway and separate driveway offer convenient parking options. This semi-detached bungalow is a perfect blend of comfort and practicality, making it an ideal choice for those seeking a peaceful yet vibrant community. Viewing is highly recommended to fully appreciate all that this lovely home has to offer.

ENTRANCE HALLWAY



INTERNAL HALLWAY



LIVING ROOM

17'5" x 10'8" (5.31m x 3.26m)



FULLY BOARDED LOFT WITH VELUX

BEDROOM ONE

11'8" x 8'11" (3.58m x 2.72m)



KITCHEN

10'5" x 7'3" (3.19m x 2.23m)



BEDROOM TWO

8'10" x 8'10" (2.71m x 2.71m)



CONSERVATORY

11'5" x 8'0" (3.48m x 2.44m)



BATHROOM



EXTERNAL



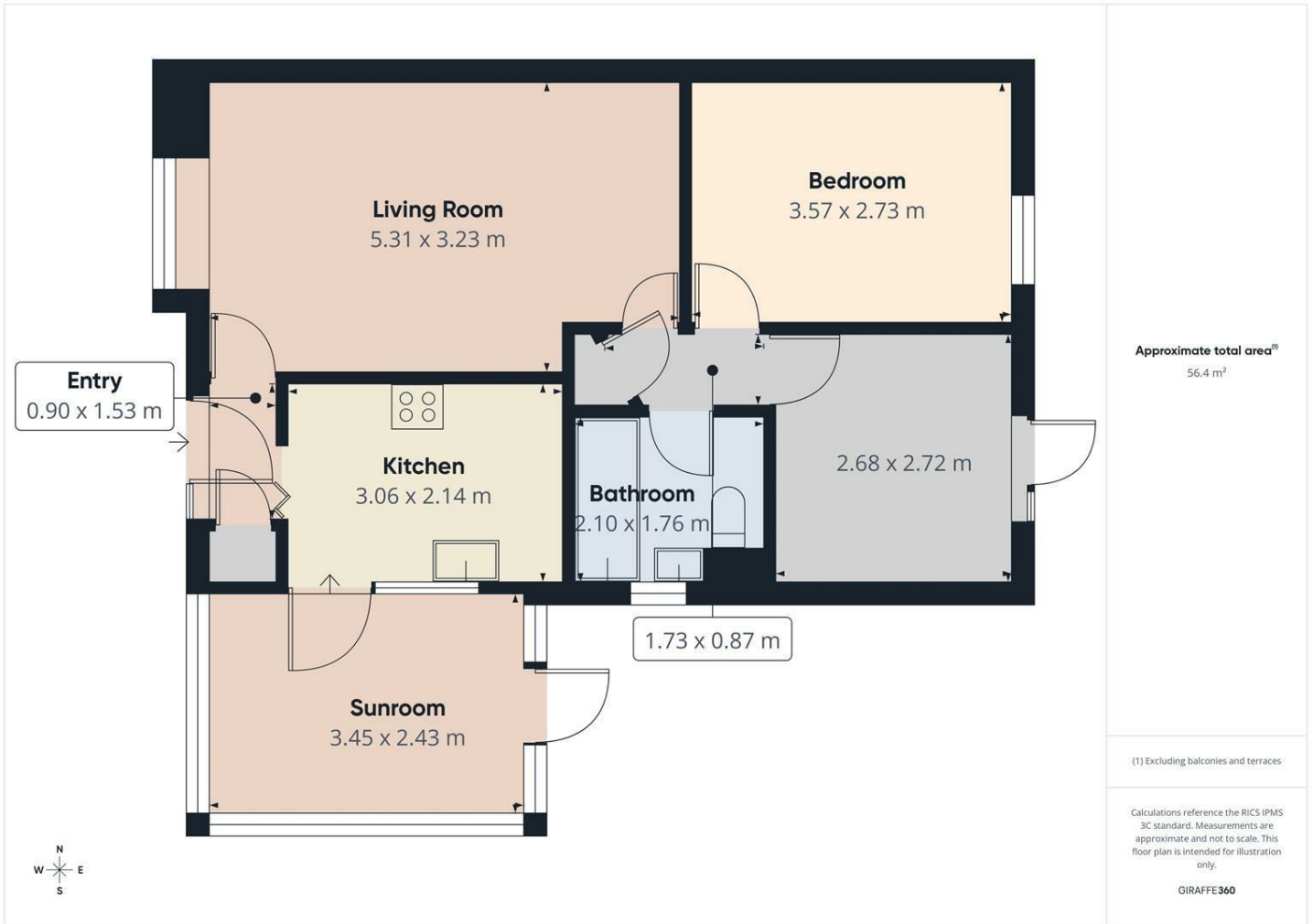
GATED DRIVEWAY

SEPARATE DRIVEWAY

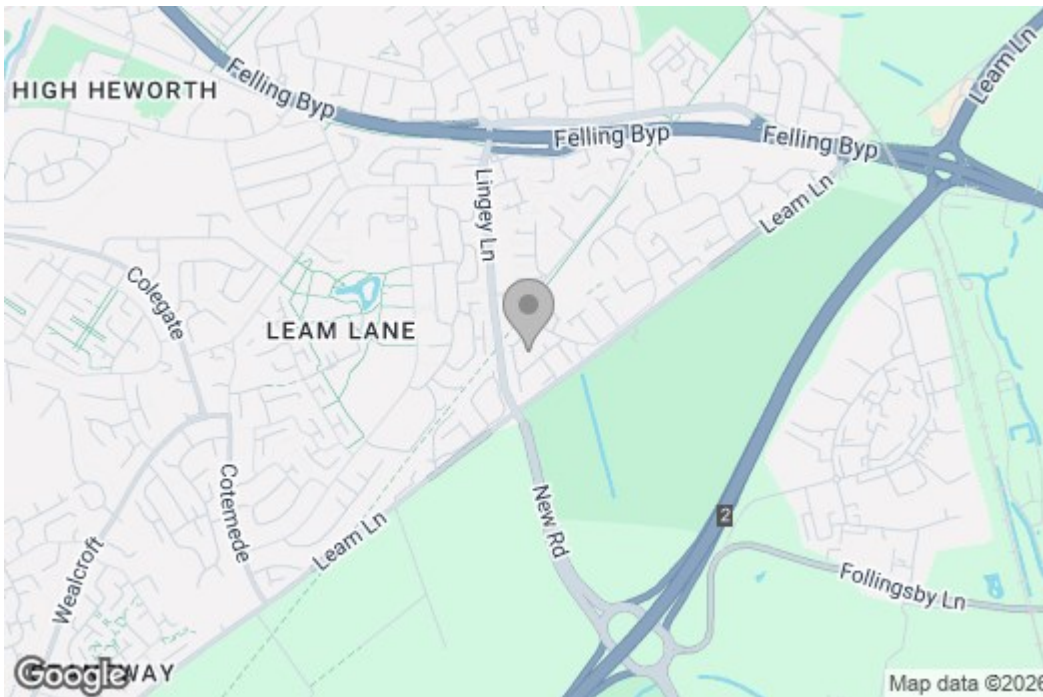
Property disclaimer

IMPORTANT NOTE TO PURCHASERS: We endeavour to make our sales particulars accurate and reliable, however, they do not constitute or form part of an offer or any contract and none is to be relied upon as statements of representation or fact. The services, systems and appliances listed in this specification have not been tested by us and no guarantee as to their operating ability or efficiency is given. All measurements have been taken as a guide to prospective buyers only, and are not precise. Floor plans where included are not to scale and accuracy is not guaranteed. If you require clarification or further information on any points, please contact us, especially if you are travelling some distance to view. Fixtures and fittings other than those mentioned are to be agreed with the seller. We cannot also confirm at this stage of marketing the tenure of this house.

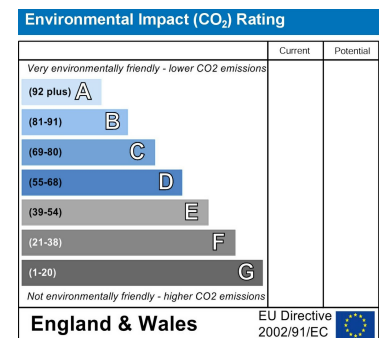
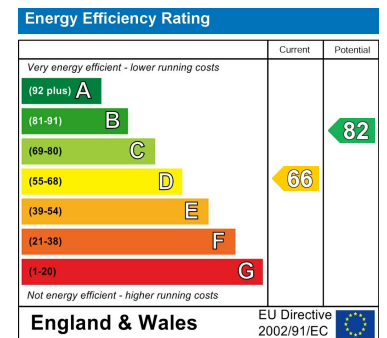
Floor Plan



Area Map



Energy Efficiency Graph



These particulars, whilst believed to be accurate are set out as a general outline only for guidance and do not constitute any part of an offer or contract, purchaser should not rely on them as statements of representation of fact, but must satisfy themselves by inspection or otherwise as to their accuracy. No person in this firm's employment has the authority to make or give an representation or warranty in respect of the property.